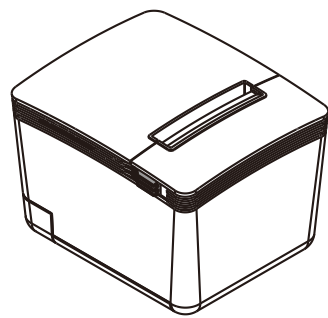


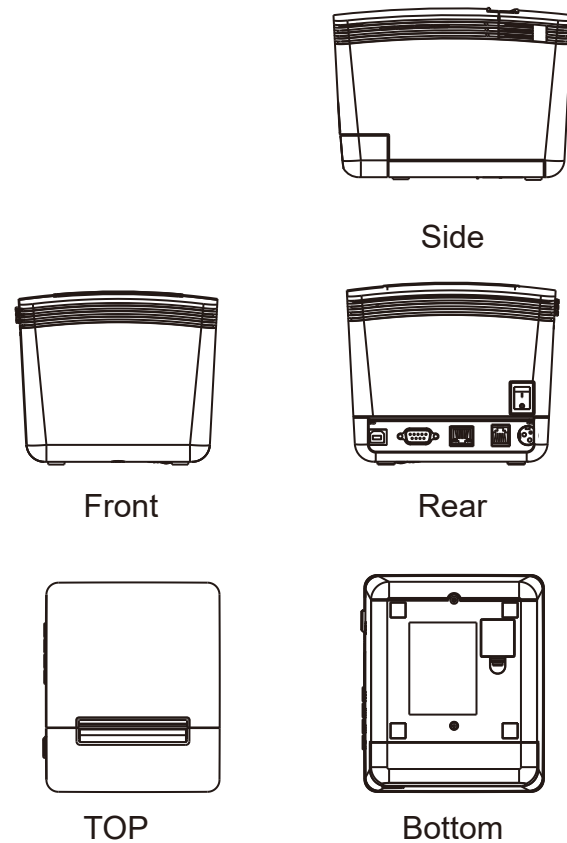
TYSSO®

PRP-300

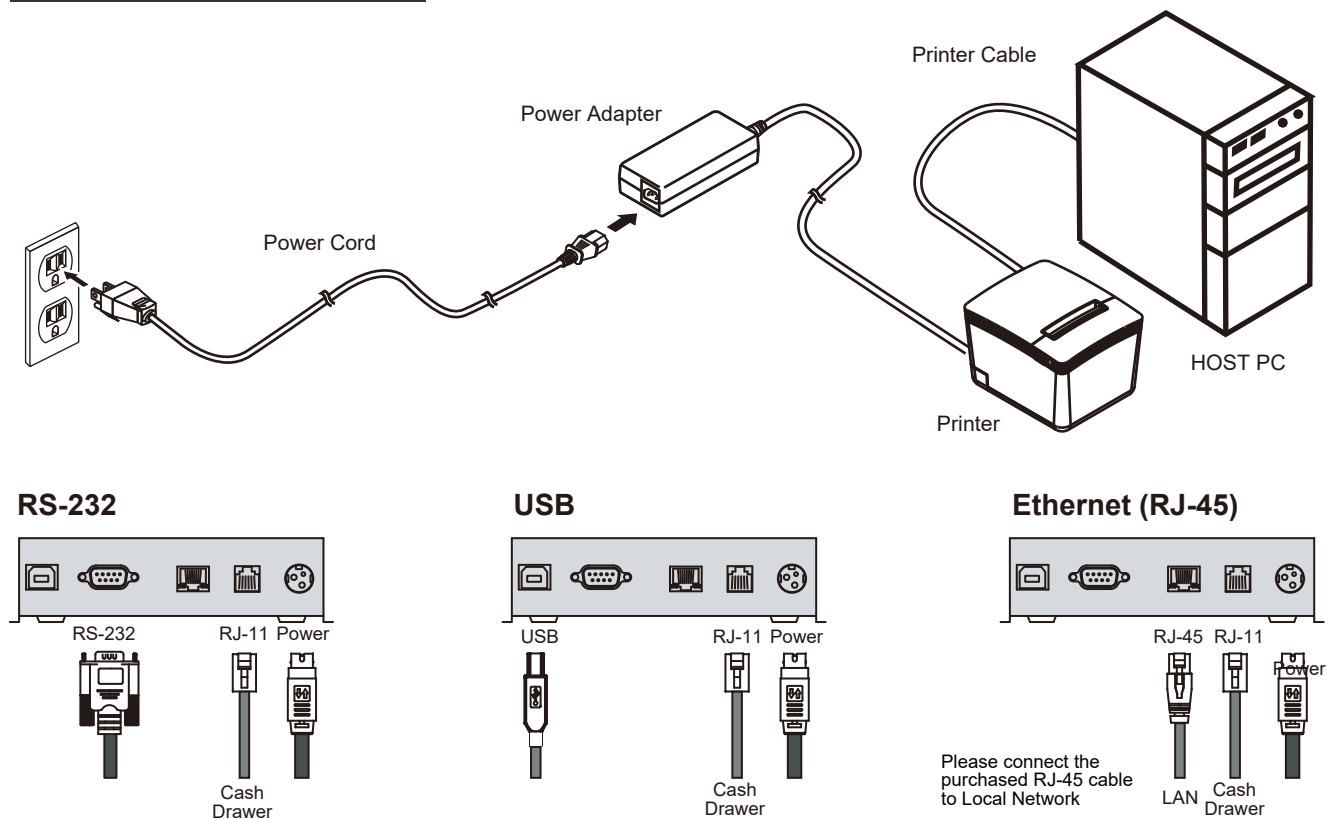
Thermal Receipt Printer Quick Installation Guide



Product Overview



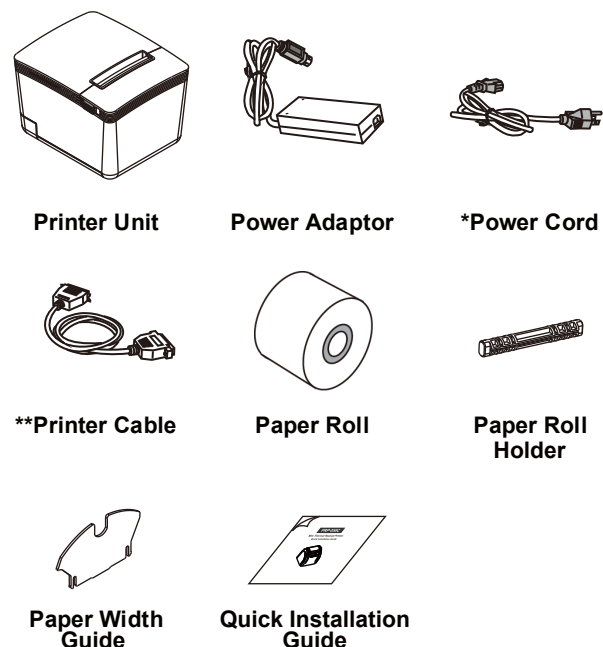
Installing your Printer



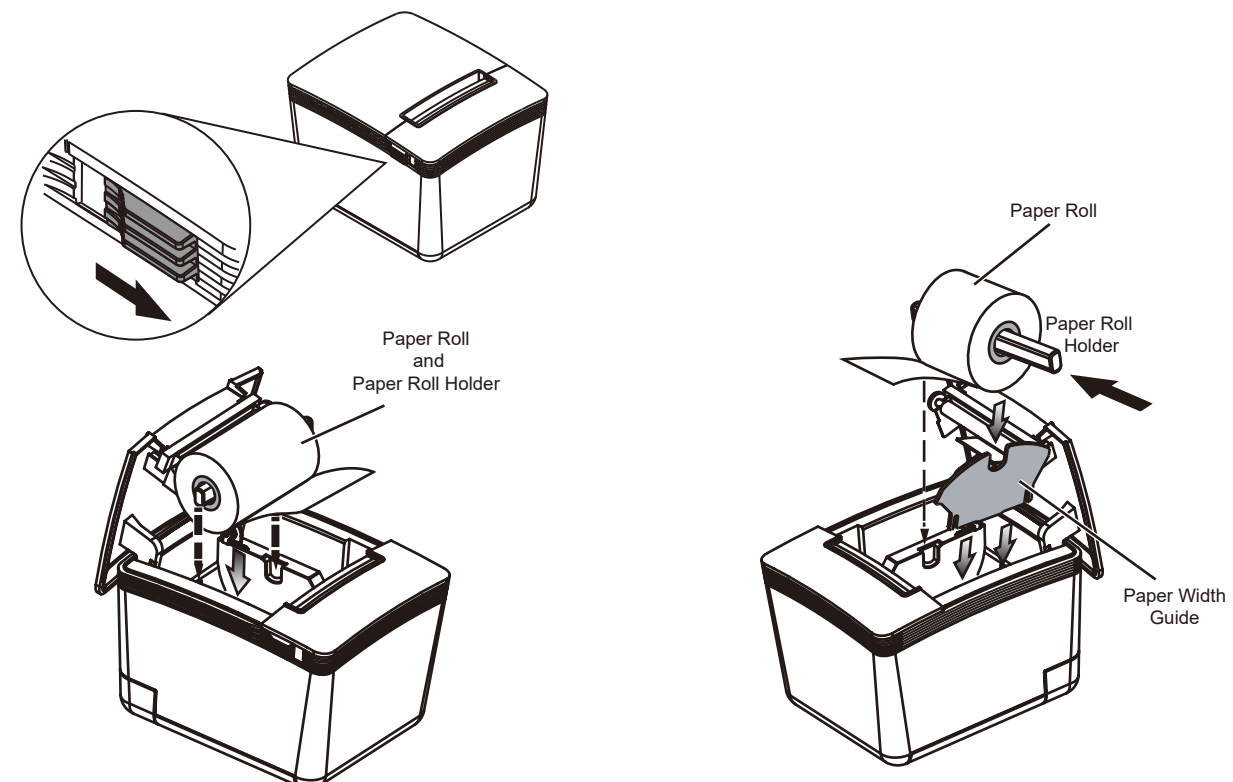
Specification

General	
Print Method	Thermal line printing
Print Speed	250mm/sec
Print Life	100 Km
Print Font	ANK Font
	Font A: 12 x 24 dots, Font B: 9 x 17 dots
Print Resolution	Chinese Character: 24 x 24 dots
	576 dots/line or 512 dots/line
Print Font Character Support	International Font, Big 5 Chinese,
	GB Chinese, Japanese, Korean selectable
Character Per Line	48 (Font A) / 64 (Font B)
Effective Print Width	72mm
Paper Width	79.5mm±0.5mm
Paper Roll Diameter	≤ 83mm
Paper Thickness	0.06~0.08mm
Driver	Win 9X/Win ME/Win 2000/ Win 2003/Win NT/Win XP/Win Vista/Win 7/Win 8, compatible with EPSON and SAMSUNG
Print Command	
Buffer	ESC/POS print commands set
	Receipt 128K bytes
	User-Defined 128K bytes
Interface	
I/O Interface	
Cash Drawer	
Notification	
Indicator	
Auto Cutter	
Paper End Notice	
Over-Heat Halt-on Protection	
Others	
Power Input	
Color	
Compliance	
Weight	
Dimension (mm)	
Operating Temperature	
Operating Humidity	
Storage Temperature	
Storage Humidity	

Contents



Installing the Paper Roll



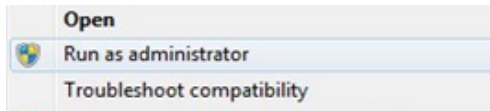
- * Power Cord is selectable depending on the types of electrical plug.
- ** Printer cable is selectable depending on the interface required (RS-232 or USB)
- *** RJ-45 cable is not supplied and need purchased separately. Please refer to the nearest local representatives for further information.

Installing the Driver of The Printer

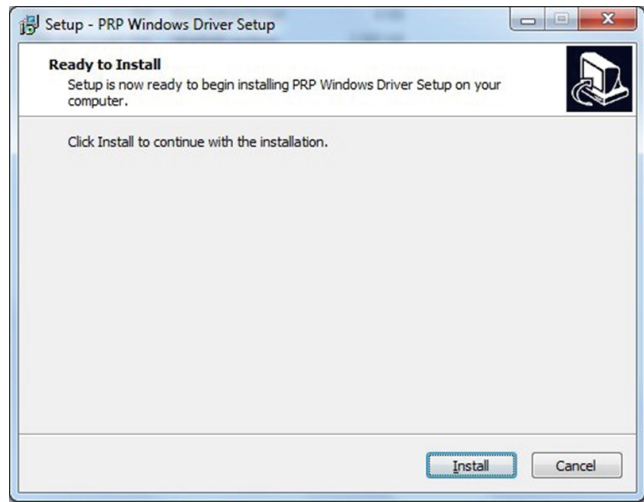
- 1. Access the website www.fametech.com.tw and download the driver.
- 2. Double click the icon “SetupPRP.EXE” to initiate the installation.



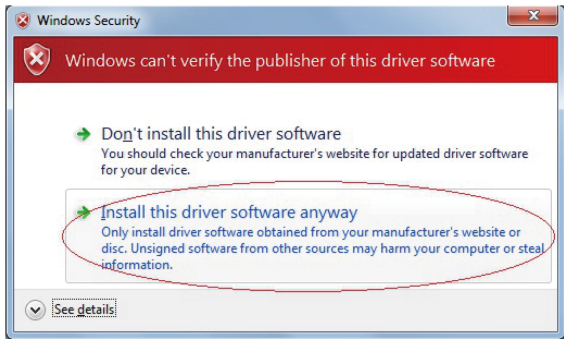
Note:
For Windows 7 / Vista and the later version,
Please Right-Click the icon and use
“Run as administrator” option while installing the Driver.



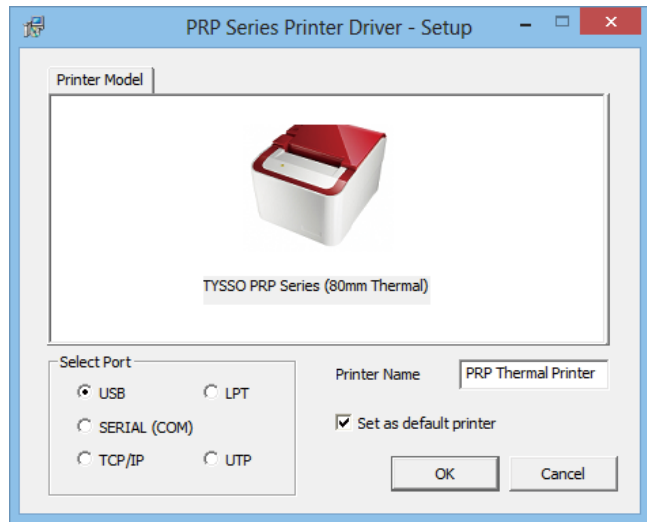
- 3. Click “Install” to continue.



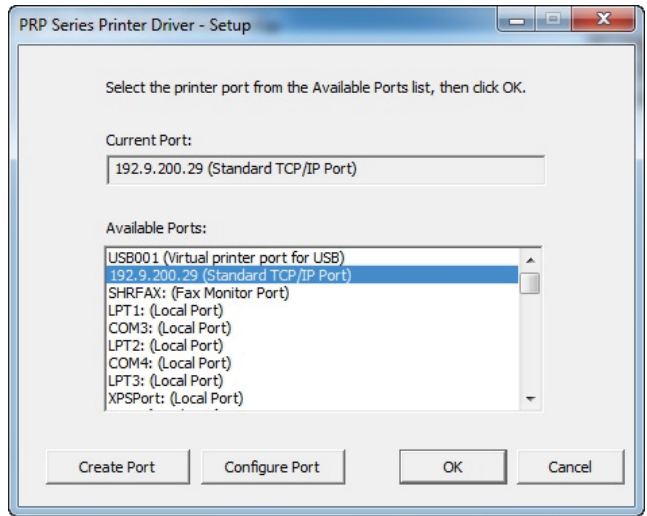
- 4. Select “Install this driver software anyway”.



- 5. Enter printer name and select the port type (USB, Serial, TCP/IP, LPT and UTP interface). You can click the checkbox to set the printer as default printer. Click “OK” to continue.



- 6. Select the proper Port available (for Serial, TCP/IP, LPT and UTP interface)



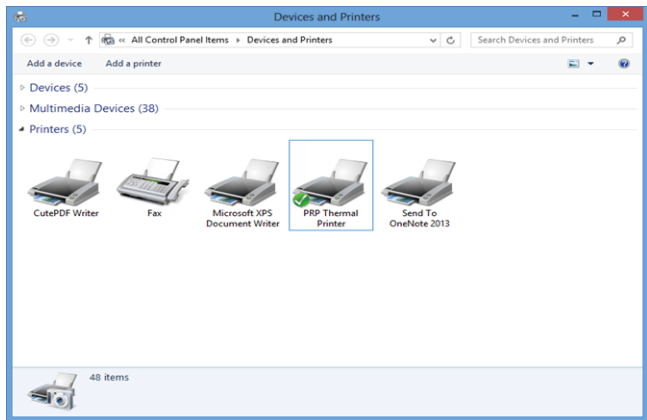
Note:
For Ethernet (TCP/IP) Interface Installation
Printing on the TCP/IP Port is only possible if both IP Address (Printer and Computer) belongs to the same class.

Please consult the IT professional before installation and refer to the instruction manual for further information.

- 6. The driver is successfully installed. Click “Finish” to exit the menu



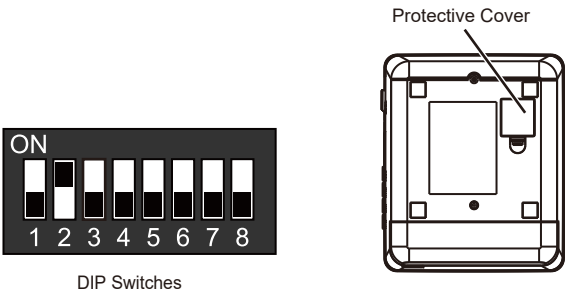
- 7. Examine the Printer
Now user can access to the “Devices and Printers” and examine the new printer.



DIP Switch Configuration

To change the setting of the printer manually:

- 1. Turn off the printer.
- 2. Remove the protective cover of the DIP Switches.
- 3. Adjust the DIP switches to configure the printer.



DIP	Function	ON	OFF
1	Paper Cutter	No	Yes*
2	Audio Alarm	Yes *	No
3	Print Density	Dark	Light *
4	Two-byte Character Code	No	Yes*
5	Character Per Line	42	48 *
6	Cutter with Cash Drawer	Yes	No *
7 & 8	Baud Rate Setting	---	OFF*

Baud Rate Setting

